

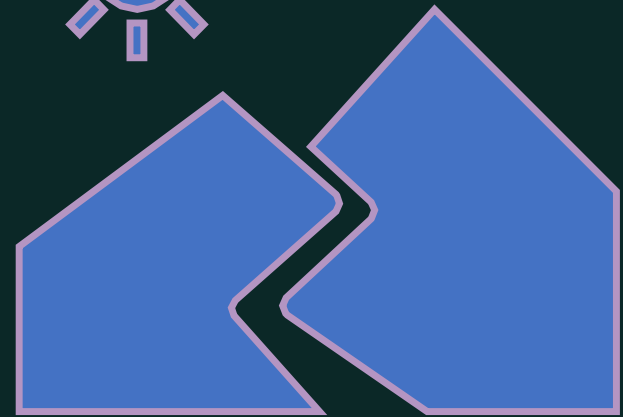
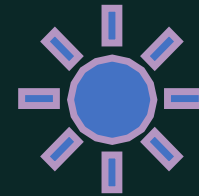
# Rules for the Road

## BLM

- ❖ Engaging with Communities in Public Land Stewardship: A Toolkit for Building Effective BLM Partnerships with Friends Groups
- ❖ BLM Donations, Solicitation and Fundraising Policy



Managing by Network  
Partnership and Community Collaboration Academy



# A.K.A: Partnership Toolkit Clear Direction and Best Practices

RELEASED SPRING 2020

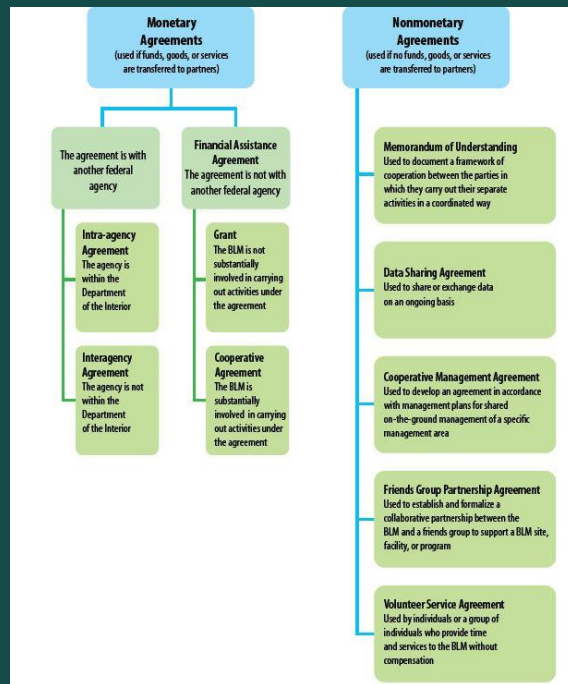


## WHAT'S INSIDE

- Success Factors: Building and Sustaining Effective Partnerships with Friends Groups
- Working with Friends Groups: 36 Frequently Asked Questions: 
- BLM/Friends Group Partnerships Profiles
- Partnership Agreement Guide and Templates

# This Toolkit Includes Quick References and Helpful Insights

## BLM DECISION TREE PARTNERSHIP AGREEMENTS



## PARTNERSHIP PROFILES PARTNERS, PARTNERSHIP, CHALLENGERS, LESSONS LEARNED AND BEST PRACTICES

### Partnership between the Campbell Creek Science Center and the Friends of the Campbell Creek Science Center

#### About the Partners – At a Glance

**Campbell Creek Science Center**

- Description:** Constructed by the BLM in 1996, the Campbell Creek Science Center engages learners in hands-on, outdoor learning experiences that increase appreciation, connection, and stewardship of Alaska's public lands and natural resources. Located on a 730-acre tract of BLM-administered land near the urban center of Anchorage, the site also includes 12 miles of maintained trails. The science center serves about 40,000 visitors a year.
- Visit:** <https://www.blm.gov/learn/interpretive-centers/campbell-creek-science-center>

**Friends of the Campbell Creek Science Center (FCSC)**

- Incorporated:** 2005
- Mission:** Dedicated to supporting the educational programs and initiatives of the Campbell Creek Science Center and addressing unmet science education needs of Alaskans.
- Activities/events:** Youth education, interpretation, outdoor recreation program support, and ecosystem program support.
- Visit:** <http://www.friendsofcampbellcreek.org/>

#### About the Partnership – At a Glance

**Purpose:** The partnership supports and enhances BLM Alaska's education, interpretation, and outreach goals through establishing opportunities for the diverse population of Alaska to receive outdoor education in natural resources.

**Year started:** 2005

center programming and operational needs and provides access to public lands for thousands of students each year.

**Resources used to accomplish partnership goals:** The BLM and FCSC work together to accomplish the education and outreach goals of the science center. The FCSC provides an all-volunteer


# DOI – BLM

## 1105 – Donations, Solicitation, and Fundraising

### ASKED AND ANSWERED

- What types of donations may BLM accept?  
How may donations be used?
- What types of donations require documentation? What does the form of the documentation look like?
- What is the checklist to determine the appropriateness of a donation?
- May the BLM solicit donations?
- What's up with donation boxes?
- May other entities solicit donations or fundraise for the BLM's benefit?
- When is a written fundraising agreement needed?
- What is the role of the BLM Foundation?

RELEASED SPRING 2020



Form 1221-2  
(June 1999)

UNITED STATES  
DEPARTMENT OF THE INTERIOR  
BUREAU OF LAND MANAGEMENT

Release	1-1801
Date	11/19/2019

MANUAL TRANSMITTAL SHEET

---

Subject

1105 – Donations, Solicitation, and Fundraising (Public)

---

**Explanation of Material Transmitted:** This release transmits policy, which tiers off the Department's Donations Policy (Departmental Manual Part 374, Employee Responsibilities and Conduct, Chapter 6: Donations Policy – 374 DM 6), and provides guidance on accepting, soliciting, using, and acknowledging donations. The policy also establishes procedures for reviewing and evaluating potential donors and donations, and for depositing, tracking, and documenting the receipt and disposition of donations. The policy also includes guidance to the BLM about fundraising by non-Federal entities on the BLM's behalf. Finally, the policy identifies the BLM's authorities for, and the Director's delegations of authority for, accepting and soliciting donations. A new BLM subject function code – 1105, Donations – has been established for donation-related activities.

2. **Reports Required:** None.

3. **Material Superseded:** None.

4. **Filing Instructions:** File as directed below.

REMOVE	INSERT
NONE	All of 1105 (Total 43 sheets)

# How to use these resources?



- **Reference** for guidance on how to respond to questions and opportunities from internal colleagues and external partners?
- **Identify** who to include in your BLM network for these types of inquiries and opportunities?
- **Share** with BLM colleagues and external partners to raise awareness of the Bureau's policy and practices.
- **Not an employee of BLM? Learn** about success factors and lessons learned to overcome challenges of public agency and nonprofit partnerships.

# For more information:

Matthew Magaletti

National Partnership Coordinator

National Conservation Lands and  
Community Partnerships Directorate,

BLM

[mmagalet@blm.gov](mailto:mmagalet@blm.gov)

Matthew serves as the BLM Federal  
Coordinator of Managing by Network  
and is a 2021 course participant.

